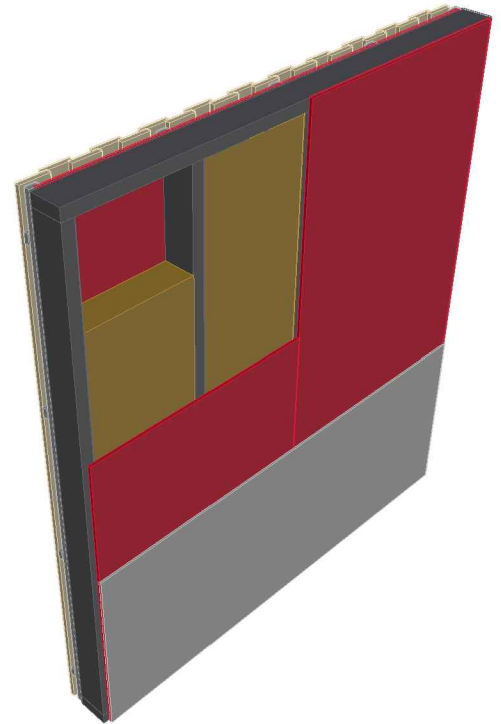


E1108-02

external wall, REI 45



	classification report	HFA 443/2014/18
	airborne sound insulation RW DIN 4109, supplement 1, table 37, row 4	42 dB
	Heat protection U-value (W/m ² K) EN ISO 6946	thermal conductivity class of insulation 0.040 160 / 200 / 240 mm 0,26 / 0,22 / 0,18

vertical section; 1:20



	construction material	dimension / thickness
A	plasterboard fire protective	-
	gypsum plasterboard (not fire protection relevant)	-
B	plasterboard fire protective	12,5 mm
	plasterboard fire protective	-
C	EGGER OSB	15 mm
D	vapour retardent membrane sd (if required)	-
	cellulose injection insulation $\geq 50 \text{ kg/m}^3$	-
E	light mineral wool $\geq 11 \text{ kg/m}^3$ stone wool $\geq 30 \text{ kg/m}^3$ cellulose injection insulation $\geq 50 \text{ kg/m}^3$ woodfibre insulation $\geq 45 \text{ kg/m}^3$	160 mm
F	timber frame / sawn timber	60 × 160 mm

horizontal section; 1:10

