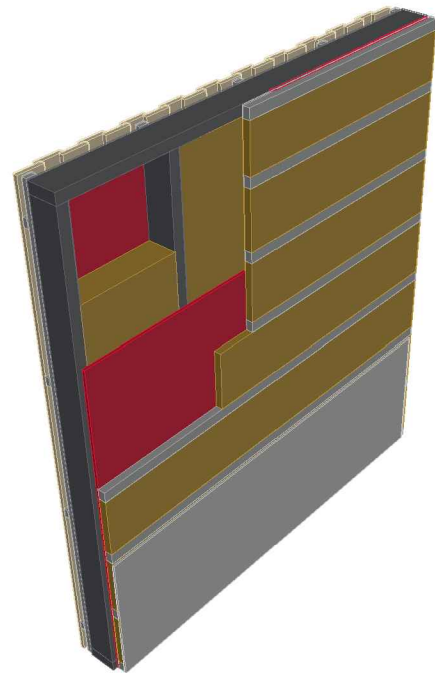


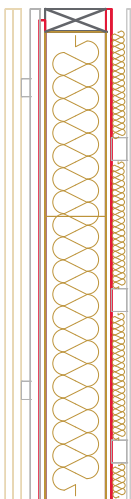
# E1154-02

## external wall; REI 30

	<b>classification report</b>	HF Austria A1972/2009/20 #443/2014/20-BB
	airborne sound insulation R' <sub>w,R</sub> , DIN 4109, supplement 1, table 37, row 4	42 dB
	Heat protection U-value (W/m <sup>2</sup> K) EN ISO 6946	thermal conductivity class of insulation 0.040 160 / 200 / 240 mm  0,26 / 0,22 / 0,18



vertical section; 1:20



	construction material	dimension / thickness
<b>A</b>	plasterboard fire protective	-
	gypsum plasterboard (not fire protection relevant)	9,5 mm
<b>B</b>	gypsum plasterboard fireboard	-
<b>C</b>	installation layer, non insulated	50 mm
<b>D</b>	<b>EGGER OSB</b>	<b>15 mm</b>
<b>E</b>	water vapour retardant sd-value	if needed
<b>F</b>	light mineral wool ≥ 11 kg/m <sup>3</sup> stone wool ≥ 30 kg/m <sup>3</sup> cellulose injection insulation ≥ 50 kg/m <sup>3</sup> woodfibre insulation ≥ 45 kg/m <sup>3</sup>	160 mm
<b>G</b>	<b>timber frame</b>	<b>60 × 160 mm</b>
<b>H</b>	<b>EGGER OSB</b>	-
	<b>EGGER DHF</b>	<b>15 mm</b>
<b>I</b>	ventilated façade	OK

horizontal section; 1:20

