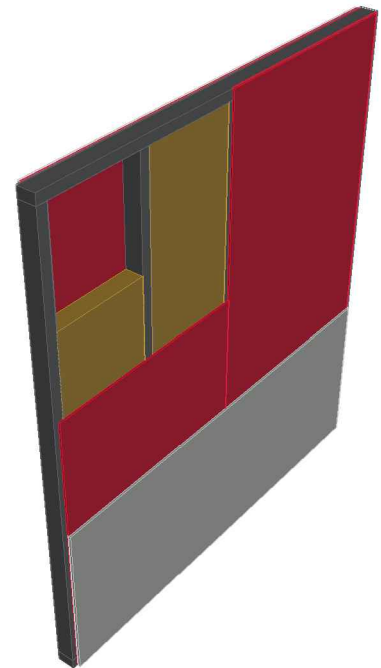


# E1307-02

internal wall, timber frame,  
load bearing; REI 30



	<b>classification report</b>	classification report, HF Austria 443/2014/21-BB
	airborne sound insulation R'w,R, DIN 4109, Beiblatt 1, Tabelle 9, Zeile 2	46 dB

vertical section; 1:20



	construction material	dimension / thickness
A	plasterboard fire protective	12,5 mm
B	water vapour retardant sd, optional	if needed
C	<b>EGGER OSB</b>	<b>15 mm</b>
D	light mineral wool $\geq 11 \text{ kg/m}^3$ stone wool $\geq 30 \text{ kg/m}^3$ cellulose injection insulation $\geq 50 \text{ kg/m}^3$ woodfibre insulation $\geq 45 \text{ kg/m}^3$ hemp insulation $30 \text{ kg/m}^3$ oder sheep wool $16 \text{ kg/m}^3$	100 mm
E	<b>timber frame</b>	<b>60 × 100 mm</b>
F	<b>EGGER OSB</b>	<b>15 mm</b>
G	plasterboard fire protective	12,5 mm

horizontal section; 1:10

