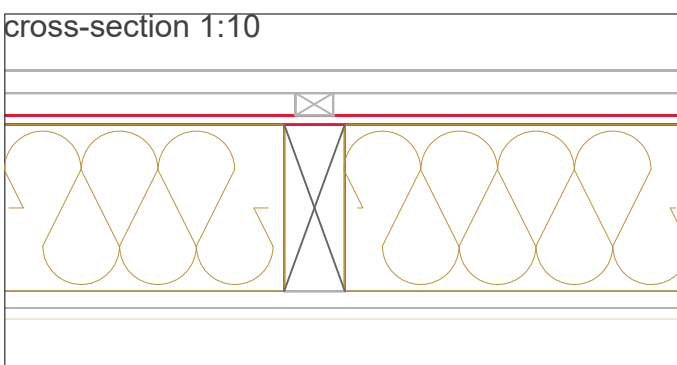
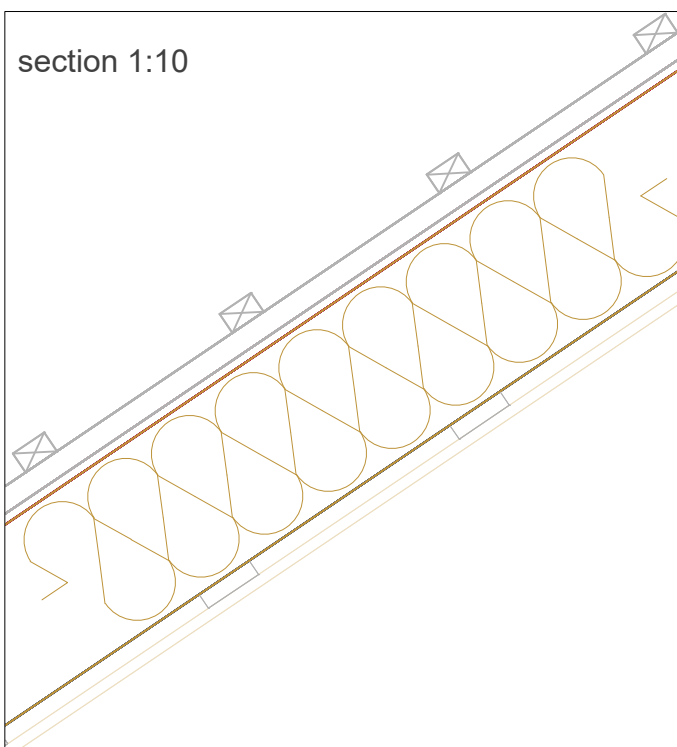
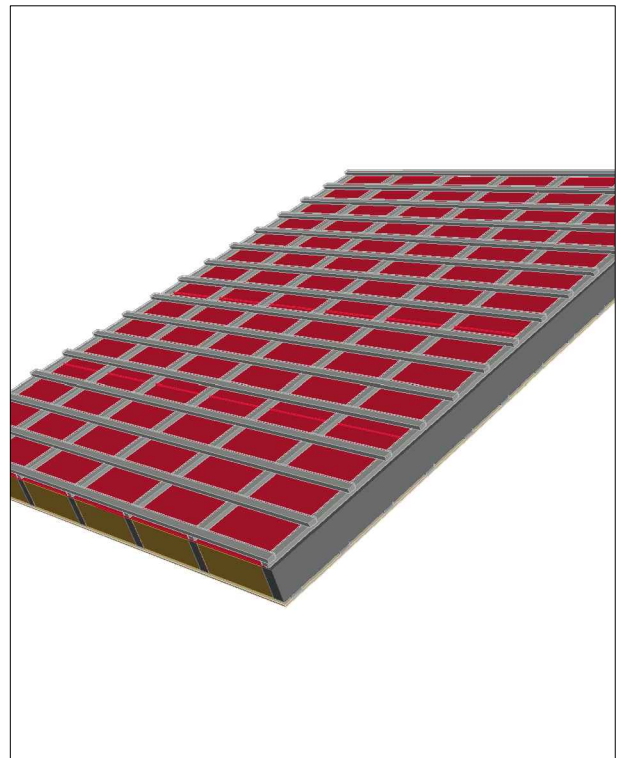


## E3201-02 pitched roof, REI 30

	<b>classification report</b>	classification report HF Austria A1973/2009/6 #443/2014/31-BB
	airborne sound insulation R'w ;DIN 4109-Beiblatt 1, Tabelle 39, Zeile 2	40 dB
	Heat protection U-value (W/m <sup>2</sup> K) EN ISO 6946 10% timber content	thermal conductivity class of insulation 0.040 220 mm  0,21 free from condensation



	construction material	dimension / thickness
A	plasterboard fire protective	15 mm
B	<b>EGGER OSB</b>	-
C	water vapour retardent	ok
D	sawn timber, spacing = 400 mm	<b>22 × 80 mm</b>
E	rafter; cc-span = 625 mm light mineral wool ≥ 11 kg/m <sup>3</sup> stone wool ≥ 30 kg/m <sup>3</sup> cellulose injection insulation ≥ 50 kg/m <sup>3</sup>	80 × 220 mm
F	woodfibre insulation ≥ 45 kg/m <sup>3</sup> hemp insulation 30 kg/m <sup>3</sup> oder sheep wool 16 kg/m <sup>3</sup>	220 mm
G	<b>EGGER DHF</b>	<b>15 mm</b>
I	roofing	OK